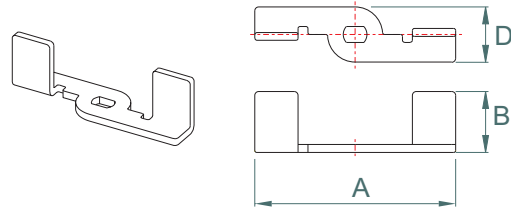


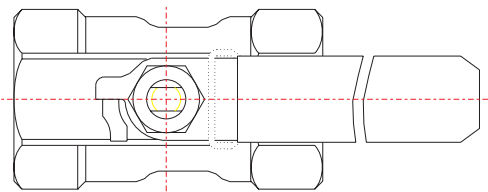


# Ver. D, Model 1-10

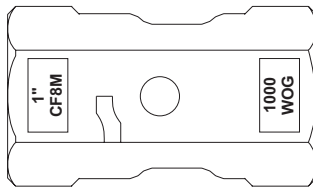
*Economical  
One-Piece Ball Valve  
Reduced Port  
1000 PSI WOG  
1/4" (DN08) to 2" (DN50)*



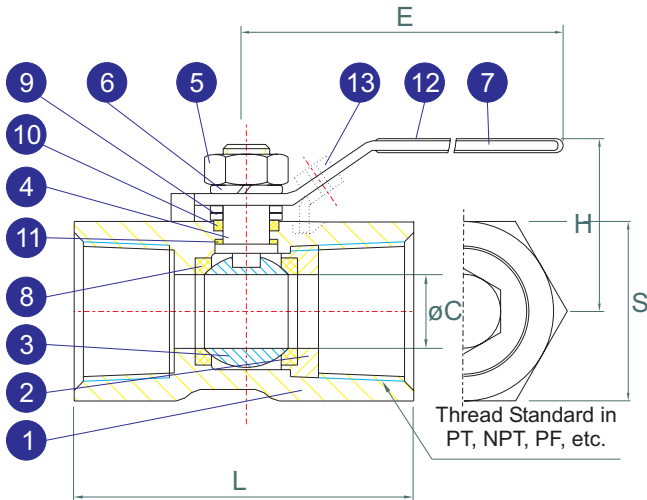
**OPTIONAL BUTTERFLY HANDLE**  
*(available from 1/4" to 1")*



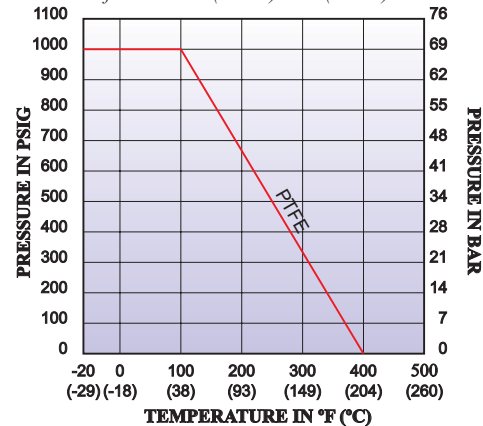
**TOP VIEW**



**MARKING ON THE BODY**



**Pressure Vs. Temperature Chart**  
*for Valve 1/4"(DN08) to 2"(DN50)*



## MATERIALS LIST

NO.	PART NAME	MATERIAL	Q'TY
1	Body	ASTM A351 Gr. CF8M	1
2	Insert*	ASTM A351 Gr. CF8M	1
3	Ball	AISI 316	1
4	Stem	AISI 316	1
5	Stem Nut	AISI 304	1
6	Spring Washer	AISI 304	1
7	Handle	AISI 304	1
8	Seat	PTFE	2
9	Gland Washer	AISI 304	2
10	Gland Packing	PTFE	1
11	Thrust Washer	PTFE	1
12	Handle Sleeve	Vinyl	1
13	‡Locking Device	AISI 304	1

‡ Available as an option

\* Valve with locking device has the insert on the opposite of the opening

## DIMENSIONS (mm)

SIZE	DN	øC	A	B	D	E	H	L	S	Weight (Kg)
1/4"	08	5	48	15	12	72	34	39	17	0.07
3/8"	10	7	51	16	14	83	36	44	21	0.11
1/2"	15	9	55	17	16	85	42	57	25	0.18
3/4"	20	13	55	17	16	85	44	60	32	0.27
1"	25	16	70	28	20	105	48	71	38	0.43
1 1/4"	32	20	N/A	N/A	N/A	105	52	78	48	0.70
1 1/2"	40	25	N/A	N/A	N/A	123	60	83	53	0.820
2"	50	32	N/A	N/A	N/A	123	60	100	65	1.30