

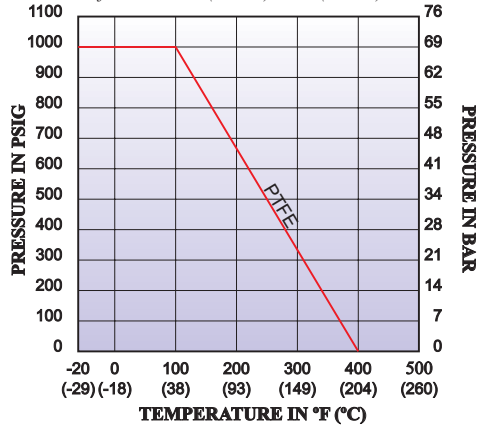


# VER. H, Model 2-10

*Economical  
Two-Piece Ball Valve  
Full Port  
1000 PSI WOG  
1/4" (DN8) to 2" (DN50)*

**Pressure Vs. Temperature Chart**

for Valve 1/4"(DN08) to 2"(DN50)

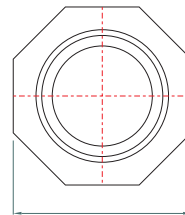
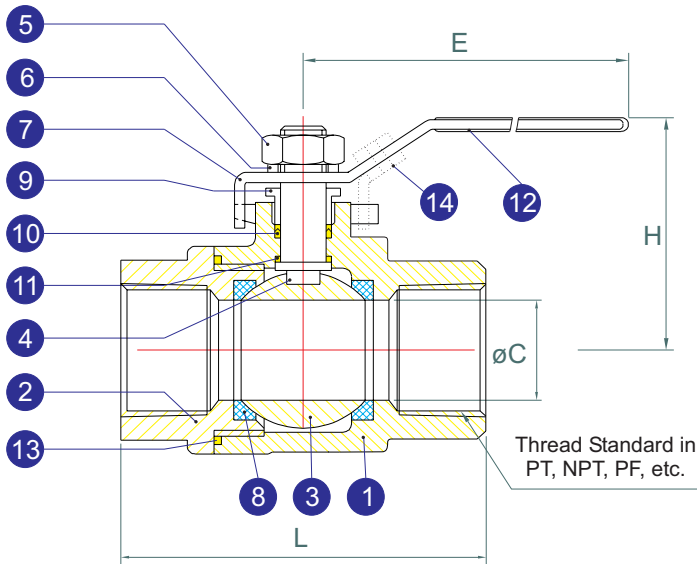


## MATERIALS LIST

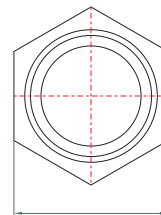
NO.	PART NAME	MATERIAL	Q'TY
1	Body	ASTMA351 Gr. CF8M	1
2	End Cap	ASTMA351 Gr. CF8M	1
3	Ball	AISI 316	1
4	Stem	AISI 316	1
5	Stem Nut	AISI 304	1
6	Stem Washer	AISI 304	1
7	Handle	AISI 304	1
8	Seat	PTFE	2
9	Gland Nut	AISI 304	1
10	Stem Packing	PTFE	1
11	Thrust Washer	PTFE	1
12	Handle Sleeve	Vinyl	1
13	Joint Gasket	PTFE	1
14	‡Locking Device	AISI 304	1

‡ Available as an option

Note: PTFE seats are standard. Other seat available as an option



For 1/2" to 2"



For 1/4" & 3/8"

## DIMENSIONS (mm)

SIZE	DN	øC	E	H	L	S	WT (Kg) W/ Lock	WT (Kg) W/O Lock
1/4"	8	11.5	99	51.5	48.5	21	0.245	0.225
3/8"	10	12.5	99	51.5	48.5	21	0.230	0.210
1/2"	15	15	105	53	56	27	0.335	0.325
3/4"	20	20	105	56	65	32.5	0.445	0.435
1"	25	25	121	66	75	40	0.685	0.660
1 1/4"	32	32	137	74	87	48	1.08	1.05
1 1/2"	40	38	160	83	98	54	1.70	1.68
2"	50	50	190	92	125	68	2.90	2.87