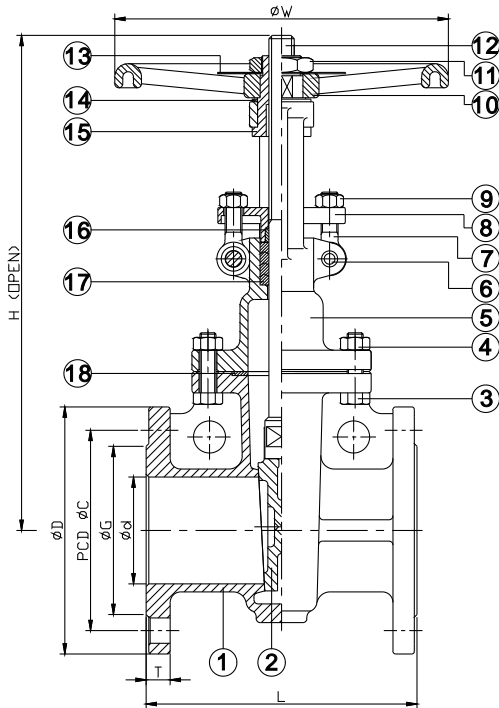




## FEATURES

- 1/2"~24" (DN15~DN600)
- W.P. : PN16  
CLASS 150/300/600
- W.T. : -20°C~200°C (-4°F~392°F)
- Investment casting
- Rising stem



ITEM	PARTS	MATERIAL	
1	BODY	ASTM A351-CF8M	ASTM A351-CF8
2	DISC		
3	BONNET BOLT	ASTM A193-B8	
4	BONNET NUT	ASTM A194-8	
5	BONNET	ASTM A351-CF8M	ASTM A351-CF8
6	HINGE PIN	AISI 304	
7	EYE BOLT	ASTM A193-B8	
8	GLAND	ASTM A351-CF8M	ASTM A351-CF8
9	NUT	ASTM A194-8	
10	HAND WHEEL	FCD	
11	NUT	BRONZE	
12	STEM	ASTM A182-F316	ASTM A182-F304
13	NAME PLATE	AISI 304	
14	SPRING	BRONZE	
15	YOKE SLEEVE	BRONZE	
16	GLAND PACKING	PTFE	
17	PACKING	PTFE	
18	SEAL	PTFE	

### CLASS 150

DN	d	L	H	W	D	C	G	T
15	15	108	182	120	89	60.5	35	12.1
20	20	117	164	120	98	70	43	12.1
25	25	127	198.5	120	108	79.5	51	12.1
32	32	140	248.5	200	117	89	64	12.7
40	40	165	248.5	200	127	98.5	73	14.3
50	50	178	278.5	200	152	120.5	92	15.9
65	65	190	312.5	200	178	139.5	105	17.5
80	80	203	377.5	250	190	152.5	127	19.1
100	100	229	429	250	229	190.5	157	23.9
125	125	254	485.5	300	254	216	186	23.9
150	150	267	589	300	279	241.5	216	25.4
200	200	292	911	350	343	298.5	270	28.6
250	250	330	849.5	400	406	362	324	30.2
300	300	356	1285	400	483	432	381	31.8

unit:mm

NPS	d	L	H	W	D	C	G	T
1/2"	0.59	4.25	7.17	4.72	3.5	2.38	1.38	0.48
3/4"	0.79	4.61	6.46	4.72	3.86	2.76	1.69	0.48
1"	0.98	5	7.81	4.72	4.25	3.13	2.01	0.48
1-1/4"	1.26	5.51	9.78	7.87	4.61	3.5	2.52	0.5
1-1/2"	1.57	6.5	9.78	7.87	5	3.88	2.87	0.56
2"	1.97	7.01	10.96	7.87	5.98	4.74	3.62	0.63
2-1/2"	2.56	7.48	12.3	7.87	7.01	5.49	4.13	0.69
3"	3.15	7.99	14.86	9.84	7.48	6	5	0.75
4"	3.94	9.02	16.89	9.84	9.02	7.5	6.18	0.94
5"	4.92	10	19.11	11.81	10	8.5	7.32	0.94
6"	5.91	10.51	23.19	11.81	10.98	9.51	8.5	1
8"	7.87	11.5	35.87	13.78	13.5	11.75	10.63	1.13
10"	9.84	12.99	33.44	15.75	15.98	14.25	12.76	1.19
12"	11.81	14.02	50.59	15.75	19.02	17.01	15	1.25

unit:in



8F., No.201, Sec. 2, Tiding Blvd., Neihu District, Taipei City 114, Taiwan R.O.C.

TEL: +886-2-26585800

FAX: +886-2-26582266 / 27997766