

# Magnetventil NAMUR, 5/2- und 5/3-Wege

Solenoid valve NAMUR, 5/2- and 5/3- ways  
Elettrovalvola NAMUR, 5/2- e 5/3-vie

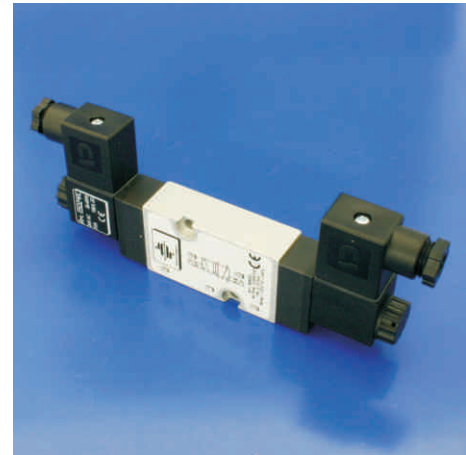
**MNI52**  
**MNI53**

## Beschreibung (Description / Descrizione)

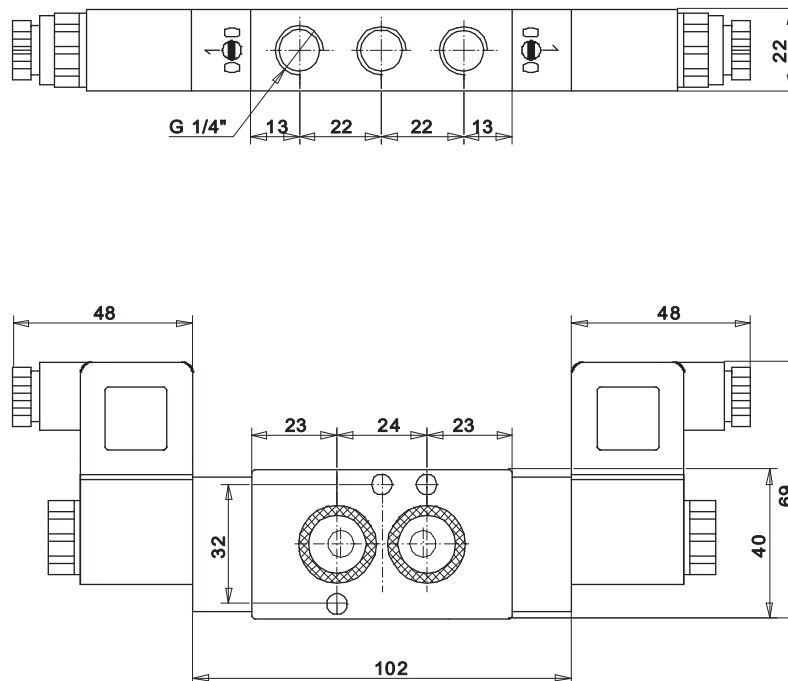
- Magnetventil NAMUR mit verschiedenen Funktionen wie 5/2- oder 5/3-Wege erhältlich mit Standardspulen und Gerätesteckern
- Impulsausführung
- Serienmäßig mit Notbetätigung, Messing
- Gehäuse Aluminium eloxiert, mit minimalen Außenabmessungen
- Kolben Edelstahl 1.4305
- Dichtungen aus NBR
- Schrauben Edelstahl 1.4301

- Solenoid valve NAMUR available with different functions like e. g. 5/2- or 5/3-ways with standard coils and connectors
- Dual stable version
- Manual override as standard, brass
- Body aluminum anodised, with min. external dimensions
- Piston stainless steel AISI 303
- Sealings NBR
- Screws stainless steel AISI 304

- Elettrovalvola NAMUR disponibile in esecuzioni diversi come 5/2- o 5/3-vie con bobine e connettori standard
- Versione bistabile
- Comando manuale in serie, ottone
- Corpo alluminio anodizzato, con dimensioni esterne ridotte
- Pistone acciaio inox AISI 303
- Guarnizioni NBR
- Viti acciaio inox AISI 304



## Maßzeichnung (Dimensions / Dimensioni)



# Magnetventil NAMUR, 5/2- und 5/3-Wege

Solenoid valve NAMUR, 5/2- and 5/3- ways  
Elettrovalvola NAMUR, 5/2- e 5/3-vie

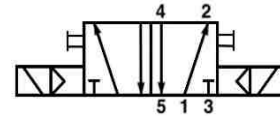
**MNI52**  
**MNI53**

## Technische Daten (Technical features / Dati tecnici)

<b>Anschluss</b> Air entry / Connessione	<b>G 1/4"</b>
<b>Nennweite</b> Dimension / Dimensione	<b>7mm</b>
<b>Arbeitsdruck</b> Air pressure / Pressione di utilizzo	<b>2-10 bar</b>
<b>Temperatur</b> Temperature / Temperatura	<b>-20°C ... +50°C</b>
<b>Schutzart</b> Enclosure / Grado di protezione	<b>IP65 - DIN 40050</b>
<b>Spannung</b> Voltage / Tensione	<b>DC: 12V, 24V</b> <b>AC: 24V, 48V, 115V, 230V</b>
<b>Leistung</b> Power consumption / Potenza assorbita	<b>DC: 3W / AC: 5VA</b>
<b>Nenndurchfluss</b> Air flow / Portata	<b>1250 l/min</b>

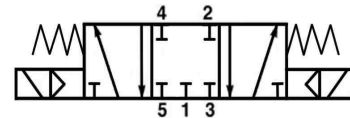
### MNI52 (5/2-Wege)

(5/2-ways) / (5/2-vie)



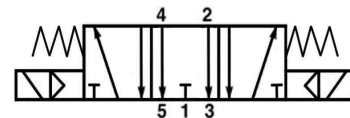
### MNI53-MSG (5/3-Wege)

(5/3-ways) / (5/3-vie)



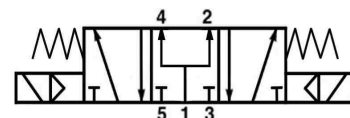
### MNI53-MSE (5/3-Wege)

(5/3-ways) / (5/3-vie)



### MNI53-MSB (5/3-Wege)

(5/3-ways) / (5/3-vie)



### MSG = Mittelstellung geschlossen

MSG = Center position closed

MSG = Posizione centrale chiuso

### MSE = Mittelstellung entlüftet

MSE = Center position deaerated

MSE = Posizione centrale disaerato

### MSB = Mittelstellung belüftet

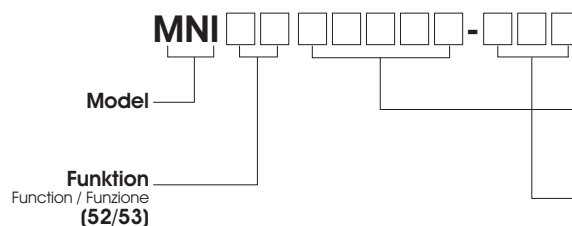
MSB = Center position aerated

MSB = Posizione centrale aerato

## Artikelnummer (Code number / Numero codice)

Preisliste Seite 6 Price list page 6 / Listino dei prezzi pagina 6

Spannung Voltage / Tensione	Artikelnummer Code number / Numero codice
12V DC	012DC
24V DC	024DC
24V AC	024AC
48V AC	048AC
115V AC	115AC
230V AC	230AC



**Spannung**  
Voltage / Tensione  
**(012DC/024DC/024AC/  
048AC/115AC/230AC)**

**Ausführung von MNI53**  
Version of MNI53 / Tipo di MNI53  
**(MSG/MSE/MSB)**