

Schalldämpfer

Silencers
Silenziatori

SDK
SDL
SDLB
SDLG

Beschreibung (Description / Descrizione)

- Schalldämpfer in verschiedenen Ausführungen für Magnetventile oder pneumatische Drehantriebe
- Gehäuse Sintermetall auf Messingverschraubung oder Polycarbonat blau oder grau

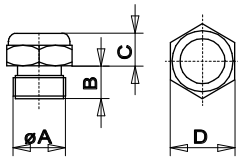
- Silencers in different executions for solenoid valves and pneumatic actuators
- Body sintered metal on brass construction or Polycarbonate blue and grey

- Silenziatori in esecuzioni diverse per elettrovalvole e attuatori pneumatici
- Corpo sinterizzato su raccordo in ottone o Polycarbonato blu o grigio



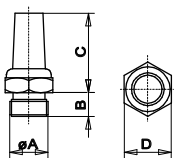
Maßzeichnung (Dimensions / Dimensioni)

Preisliste Seite 8 Price list page 8 / Listino dei prezzi pagina 8



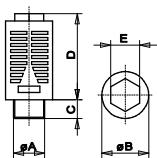
Model SDK

	SDK1/8"	SDK1/4"	SDK3/8"	SDK1/2"	SDK3/4"	SDK1"
ØA	1/8"	1/4"	3/8"	1/2"	3/4"	1"
B	4,5	6	7	8	9	11
C	5	5	5,5	5,5	8	9,5
D	12	15	19	23	30	36



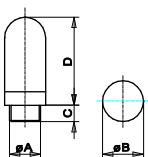
Model SDL

	SDLM5	SDL1/8"	SDL1/4"	SDL3/8"	SDL1/2"	SDL3/4"	SDL1"
ØA	M5	1/8"	1/4"	3/8"	1/2"	3/4"	1"
B	3,5	4,5	6	7	8	9	11
C	13,5	16,5	21	28	32,5	42,5	55
D	7	12	15	19	23	30	36



Model SDLB

	SDLB1/8"	SDLB1/4"	SDLB3/8"	SDLB1/2"
ØA	1/8"	1/4"	3/8"	1/2"
ØB	15,5	19,5	24,5	24,5
C	6	8	11	11
D	27	35	47	47
E	10	12	16	16



Model SDLG

	SDLGM5	SDLG1/8"	SDLG1/4"	SDLG3/8"	SDLG1/2"
ØA	M5	1/8"	1/4"	3/8"	1/2"
ØB	7	13	17	25	25
C	4	5	6,5	7	8
D	20	23	27,5	57	57