



Ver. J, SERIES S-T2

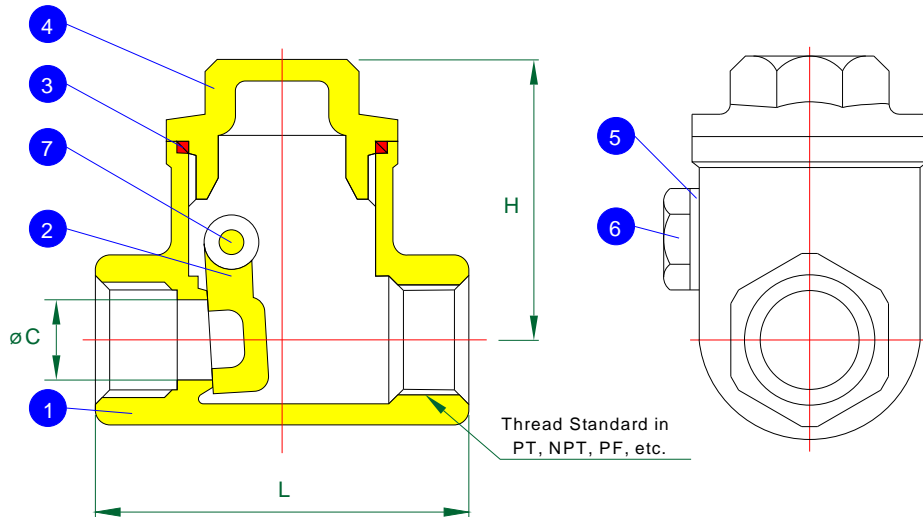
Swing Check Valve

Threaded End

Full Port

ANSI Class 200

3/8" (DN10) to 3" (DN80)



MATERIALS LIST

NO.	PART NAME	MATERIAL	Q'TY
1	Body	ASTM A351 Gr. CF8M	1
2	Disc	SUS 316	1
3	Gasket	PTFE	1
4	Cap	ASTM A351 Gr. CF8M	1
5	Plug Gasket	PTFE	1
6	Plug	SUS 316	1
7	Hinge Pin	SUS 316	1

DIMENSIONS (mm)

SIZE	øC	H	L
3/8"	13.0	45	65
1/2"	15.0	45	65
3/4"	20.0	56	80
1"	25.0	62	90
1 1/4"	32.0	72	105
1 1/2"	40.0	73	120
2"	50.0	82	140
2 1/2"	65.0	93	180
3"	80.0	104	200